

**OKTOBERFEST 2011 PROGRAM SCHEDULE**  
**Thirty Year Anniversary**  
**1981-2011**

**FRIDAY, OCTOBER 28, 2011**

A. S. Salley Archives open for research.....9:00 AM – 2:00 PM

Registration – Family Life Center.....4:00 – 6:15 PM

Family tables.....4:00 – 6:15 PM

Dinner in Bryant Hall (reservation required).....6:30 PM  
Honoring our Past Presidents of OGS GS – Thirty Years of Service  
Speaker: Dr. Thomas R. Hart, Professor of History, UNC Wilmington  
"German-Swiss and the New South in Lower Orangeburg County."

**SATURDAY, OCTOBER 29, 2011**

Registration (coffee & pastries).....8:30 AM

Annual Business Meeting.....9:00 AM

Family Tables.....12:00 AM – 3:00 PM

Vendor Tables.....9:30 AM – 3:00PM  
(Some vendors may not be available for entire stated time)

*Utilizing Ancestry.com* - Lynn Teague.....9:30 AM

***Changing Orangeburgh District Boundaries and Jurisdictions***

**Margaret Waters.....10:00 AM**

Break.....10:30 AM

*Immigrant Ships Migrations* - Jim Rickenbaker.....10:45 AM

*All for Liberty* – Chris Weatherhead Felder.....11:15 AM

Lunch in Bryant Hall (reservations required) .....12:00 PM – 1:00PM

Family Tables and Vendors.....12:00 PM – 3:00 PM

\*meal reservation deadline October 26 th

\*note: program is subject to last minute additions and changes

10/02/2011



# The Changing Boundaries of Orangeburgh District

---

**Major streams** of the area are good reference points – Santee/Congaree, Four Hole Swamp, North and South (Forks) of the Edisto River, Savannah River

**Proprietary Counties** – Used to describe land locations in colonial era! Craven not within Orangeburgh District; Granville was within area that became Barnwell District; Orangeburgh District included parts of Berkeley and Colleton Counties.

**Parishes** – Three primary configurations of St. Matthews Parish between 1765 and 1865; Orange Parish existed from 1778 to 1865 with one major and several minor changes.

**Districts** – Orangeburgh District existed from 1769 to 1868; lost area to Barnwell District in 1800 and Lexington District in 1804; had several minor boundary modifications over the period.

**Extinct Counties** – created within districts in 1785 but never functioned in low country districts; discontinued in 1791 for Orangeburgh District and in 1799 for remainder of state. These counties were used for 1800 census, though!

**Townships** – Orangeburgh and Amelia Townships created in 1730s but eventually lost significance. Modern day townships first used for 1870 census but boundaries were not very clear and changed somewhat over the years.

**Modern Counties** – Established in 1868 for entire state. Orangeburg County lost area in 1871 to Aiken County and in 1908 to Calhoun County; gained area in 1962 from Berkeley County.

## Early Census Divisions within Orangeburgh District:

1790 – North Part and South Part divided at the Road to Ninety Six running through the Forks area

1800 – Extinct Counties were used; Lewisburg County section does not exist

1810 – No internal divisions

1820 through 1840 – Orange Parish and St. Matthews Parish

1850 – Unique areas that did not seem to follow any established jurisdictional lines

1860 – Post Office locations given on most pages

1870 – First use of townships; some were missed or lost

## Useful References:

South Carolina Department of History and Archives website – Click on “Research and Genealogy”, then select “Maps Tracing the Formation of Counties” (<http://www.scdah.sc.gov/>)

*South Carolina Atlas of Historical County Boundaries*, edited by John H. Long. This was a project of the Newberry Library (of Chicago) to document boundary changes for all US counties. The results were originally published in a series of volumes by state but can now be accessed online.

(<http://publications.newberry.org/ahcbp/>) The printed version has the most detailed maps!

*Orangeburgh German-Swiss Newsletter*, volume 11 (Fall 2005) to volume 13 (Spring 2008) has a series of articles by Margaret Waters on the early census records of Orangeburgh District. Boundary issues are discussed in detail. (<http://www.ogsgs.org/>)

*Orangeburghplats.com* – website of Margaret Waters. Sign up to the blog to keep track of ongoing research with Orangeburgh District land records. (<http://orangeburghplats.com/>)

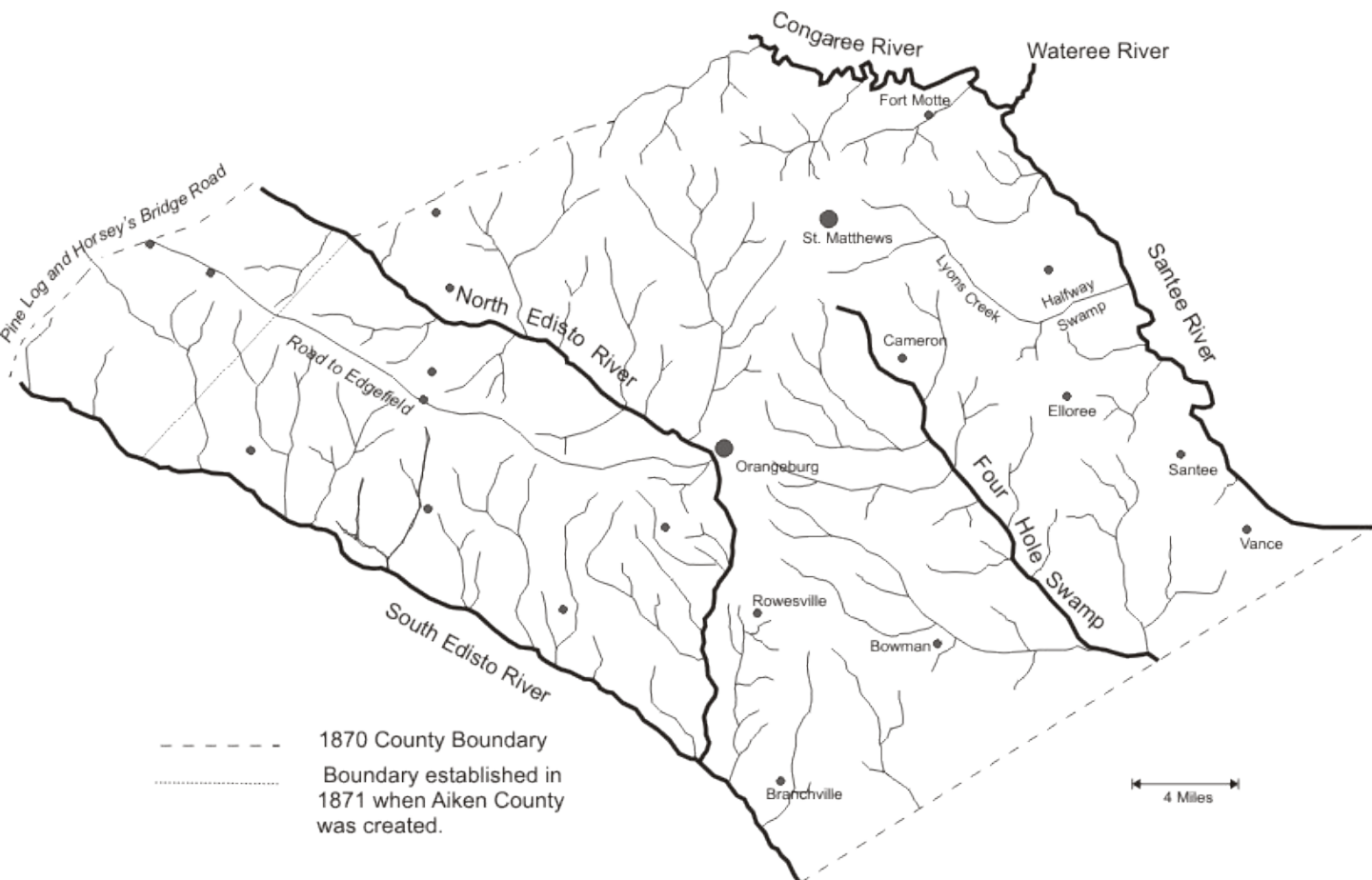
*SCIWAY* – 1883 SC Department of Agriculture map showing townships can be viewed at this website (<http://www.sciway.net/hist/maps/mapsstate.html>)



# The Changing Boundaries and Jurisdictions of Orangeburgh District, SC



# Major Streams



Margaret G. Waters  
[www.orangeburghplats.com](http://www.orangeburghplats.com)  
2008

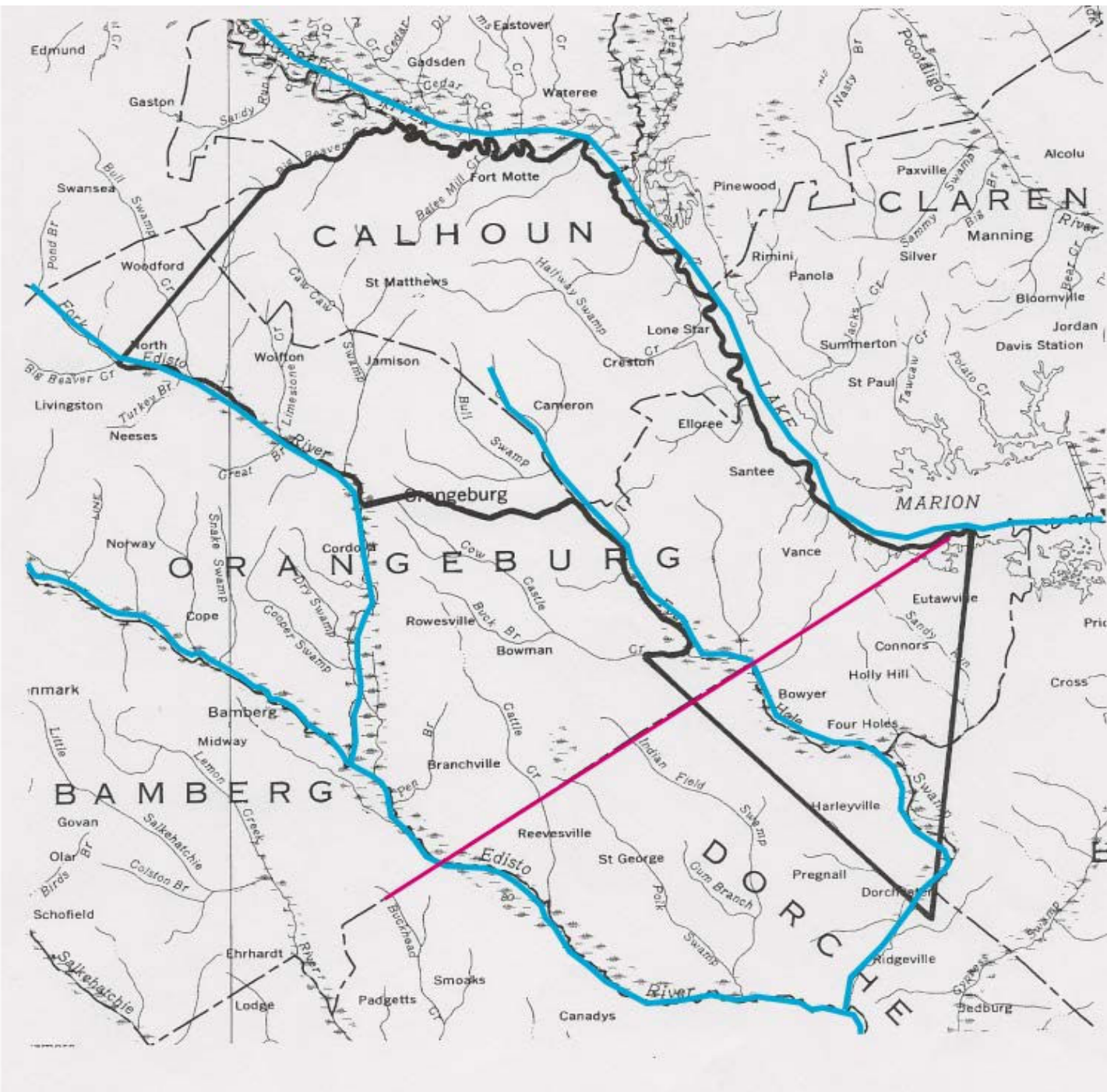


# Proprietary Counties:

- Berkeley
- Colleton
- Craven - none
- Granville -  
Barnwell



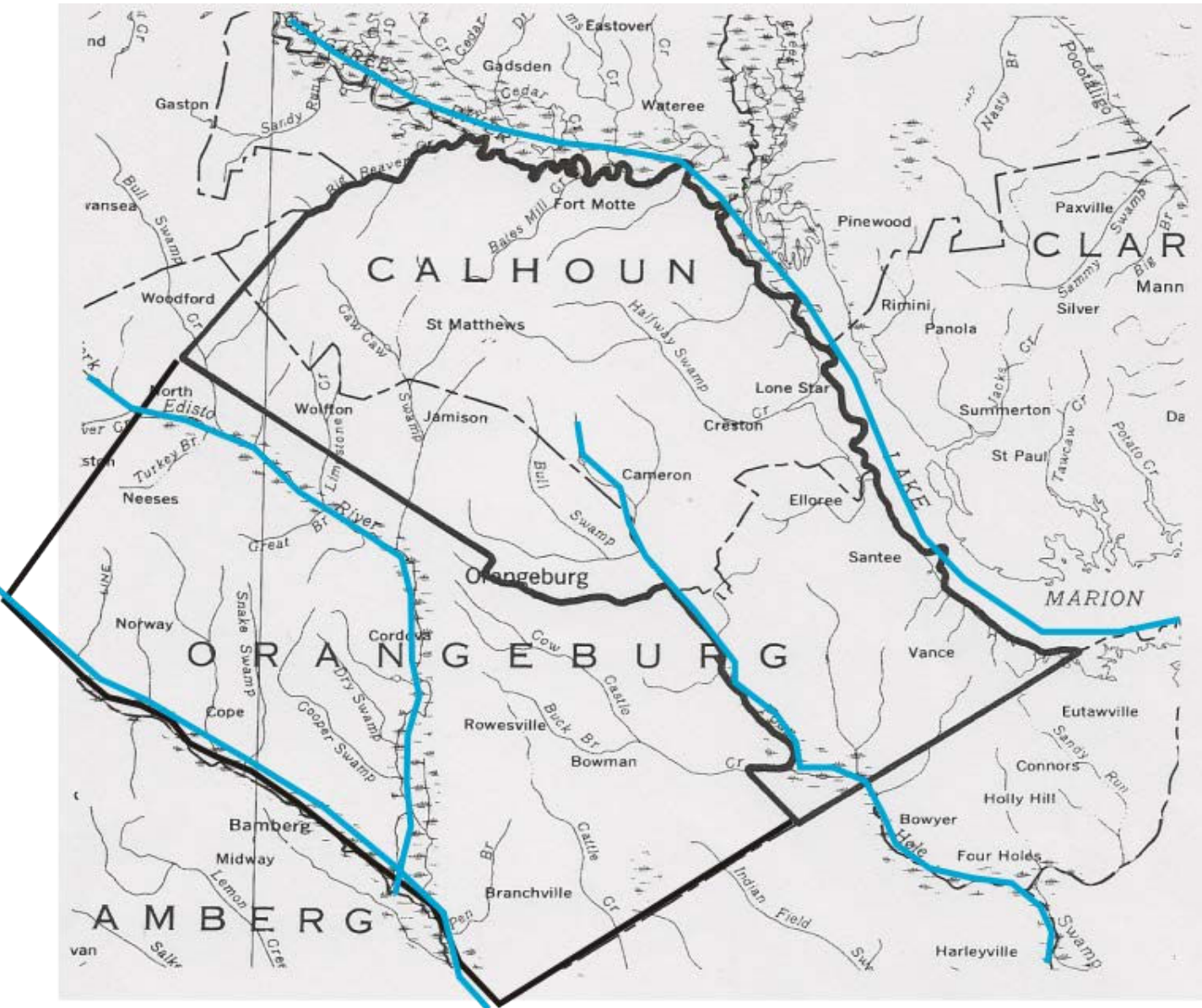
# St. Matthews Parish



1765 To 1778



# Orange Parish and St. Matthews Parish

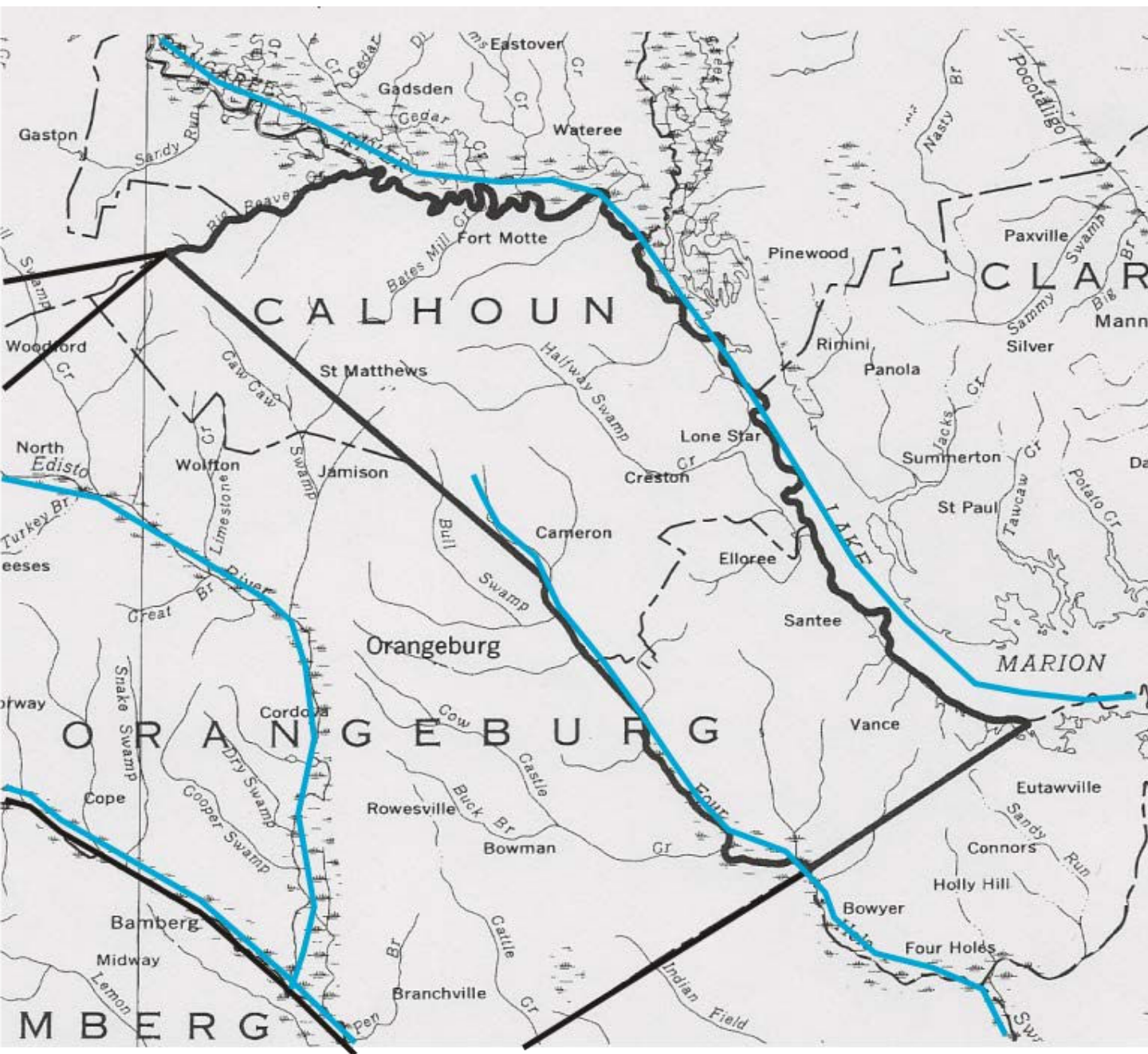


1778 To 1803





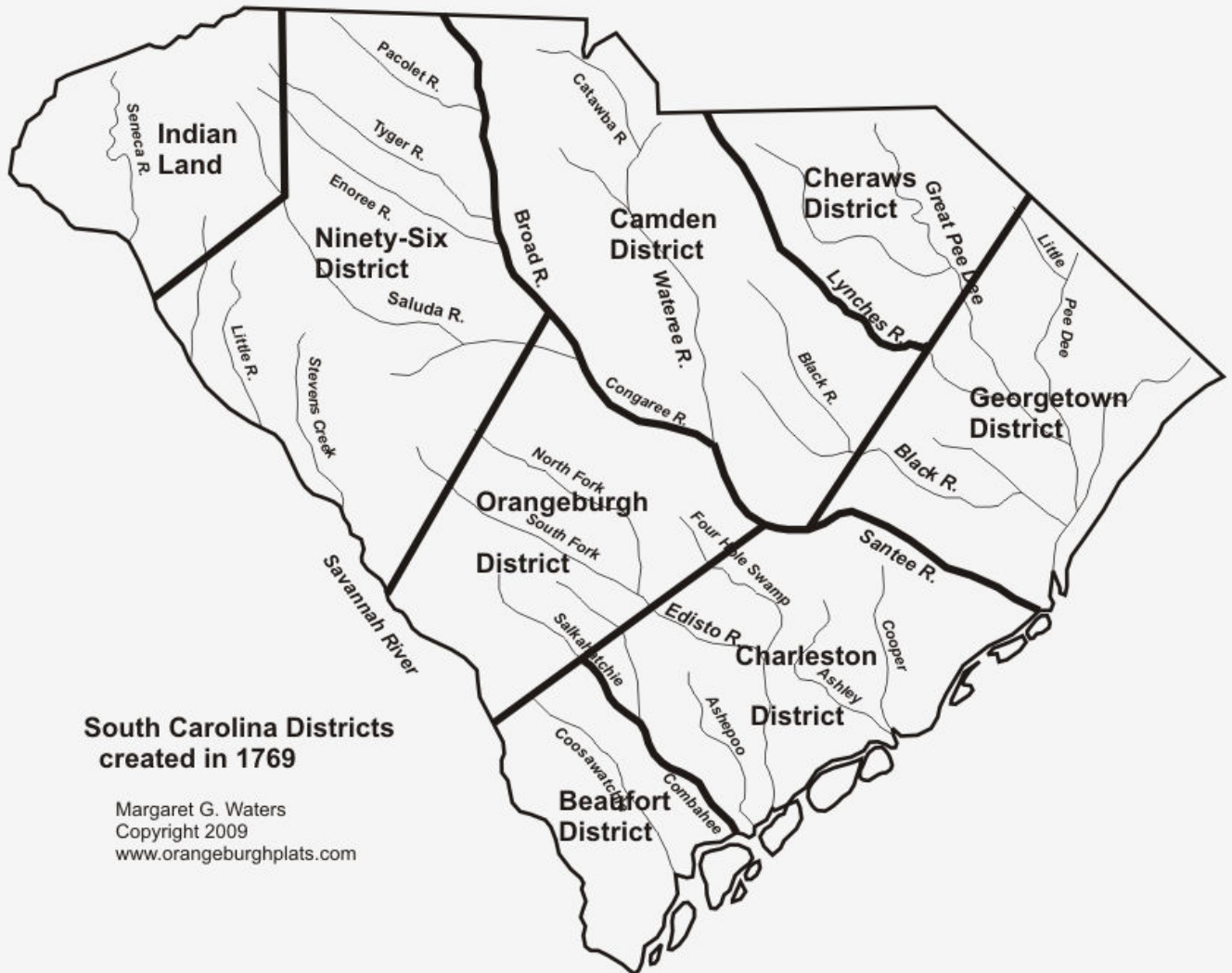
# Orange Parish and St. Matthews Parish



1803\* to 1865



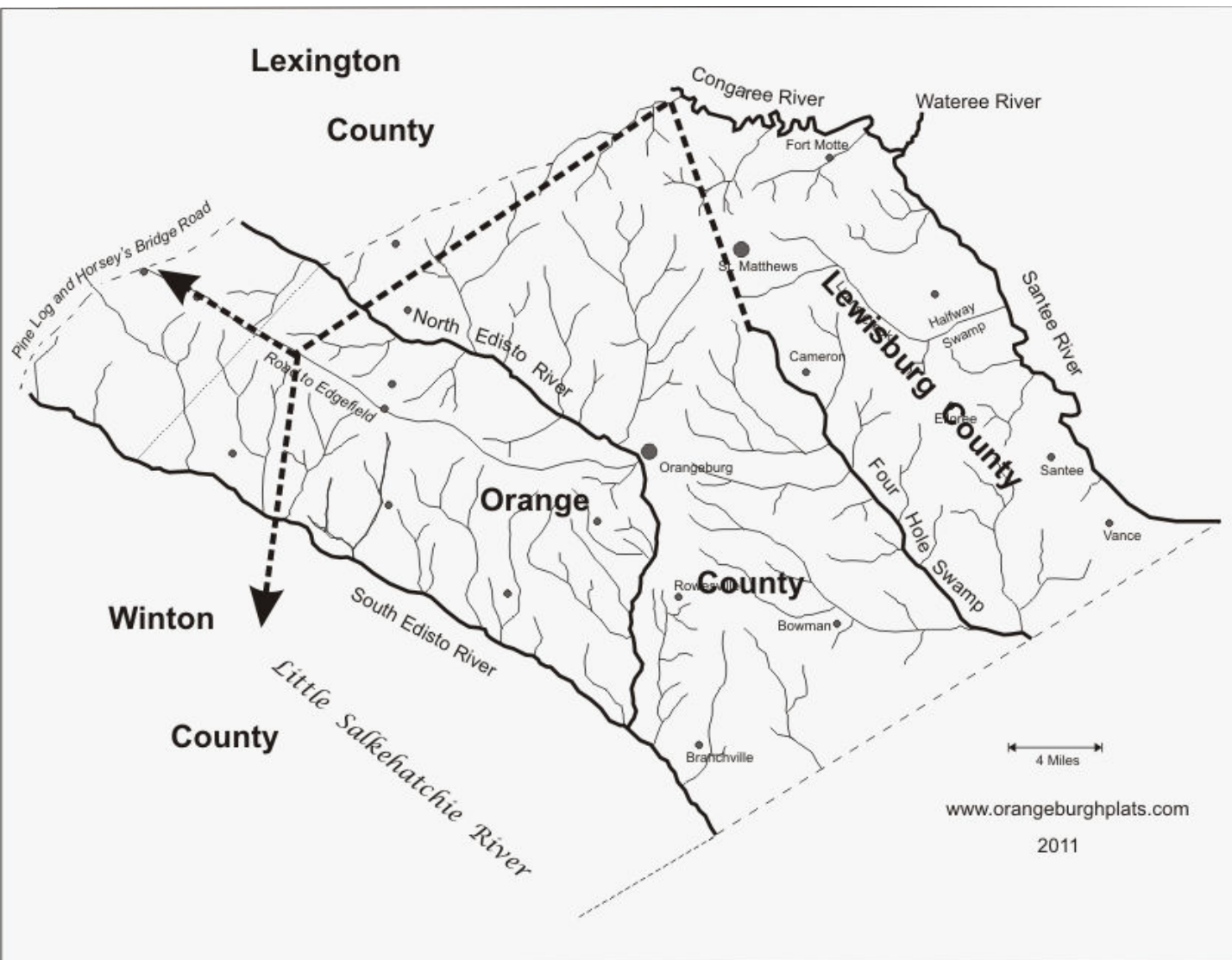
# Orangeburgh District



1769 To 1800\*



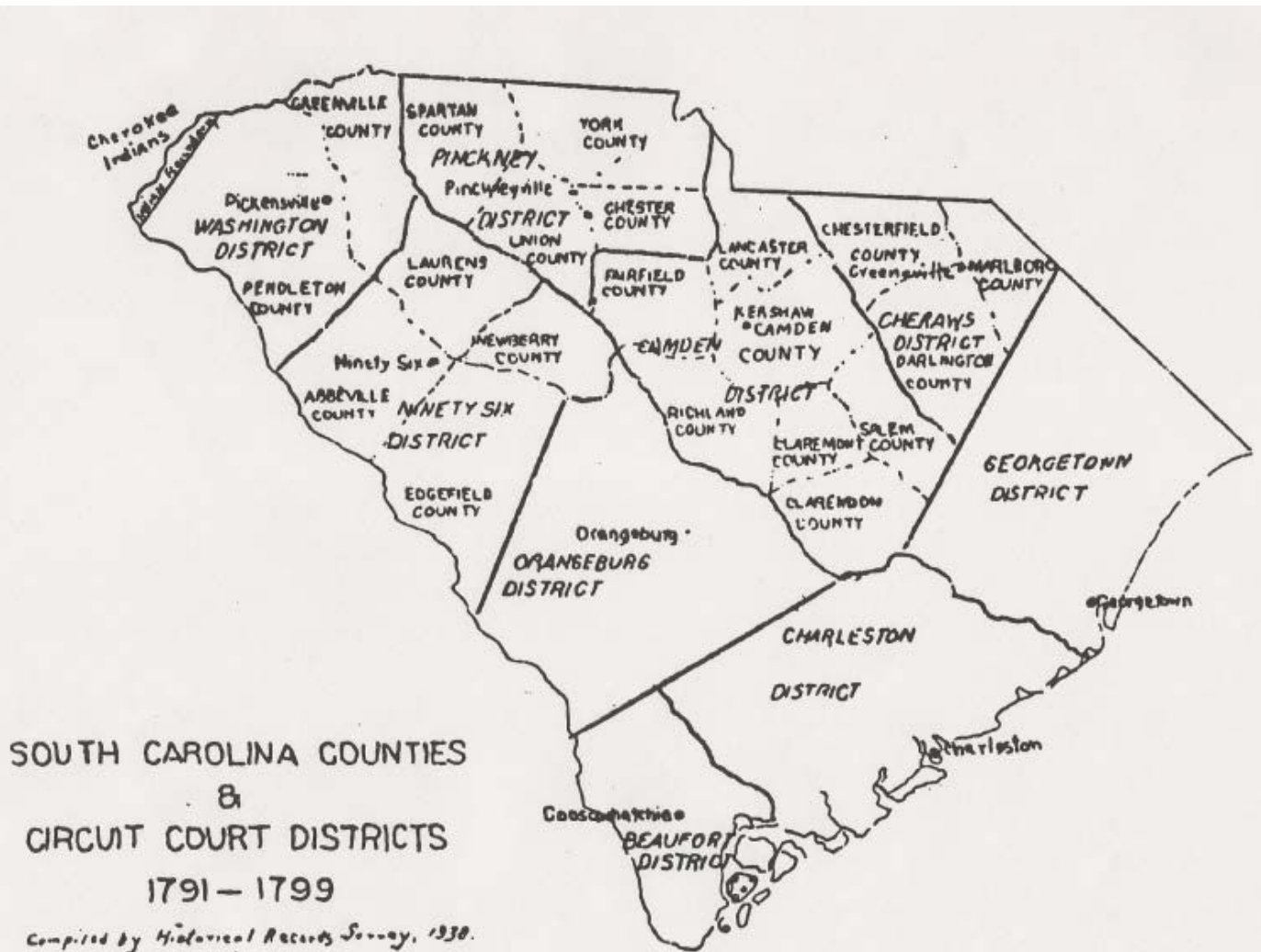
# Counties within Orangeburgh District



1785 To 1791



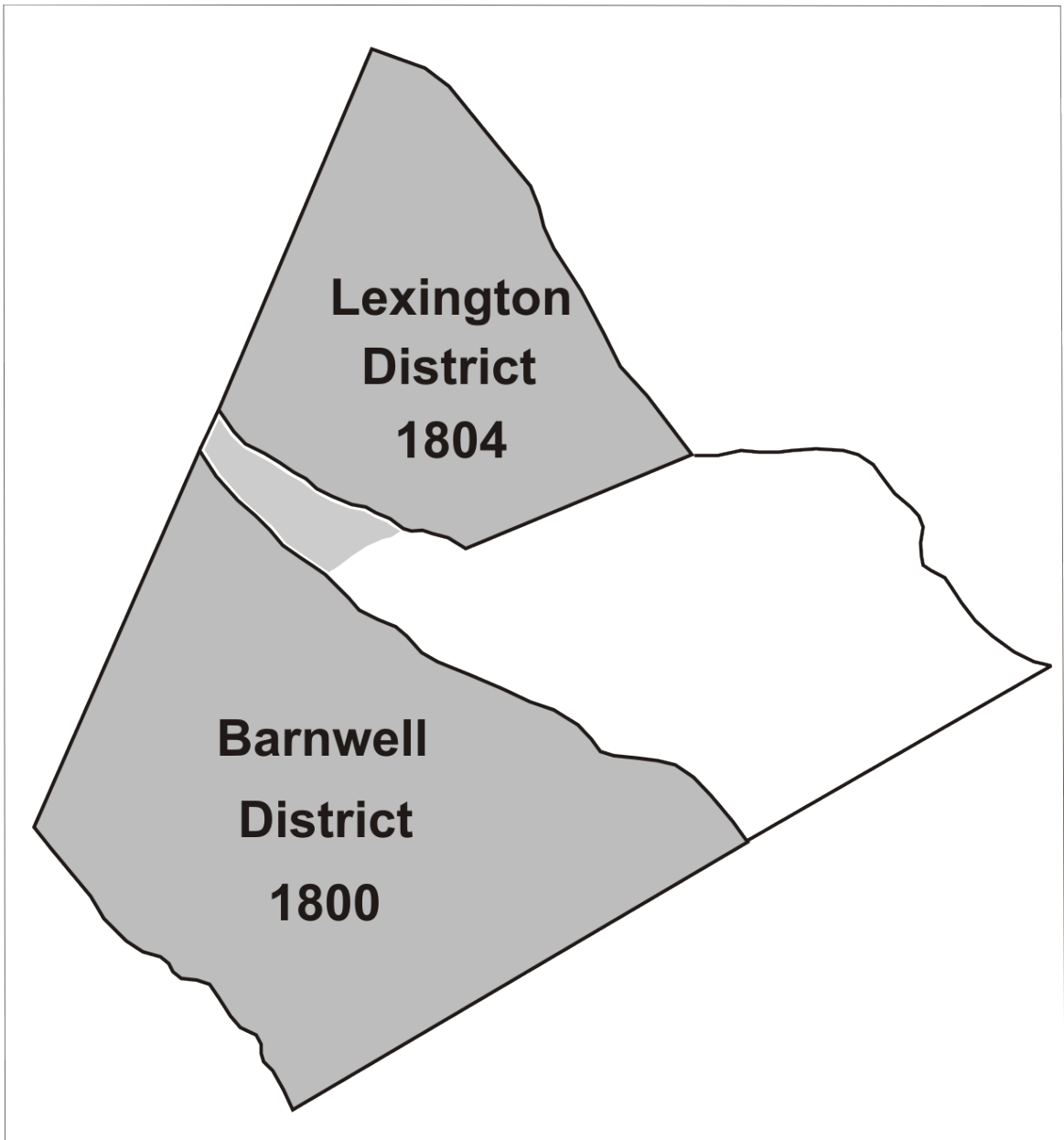
# Orangeburgh District Counties Eliminated



1791

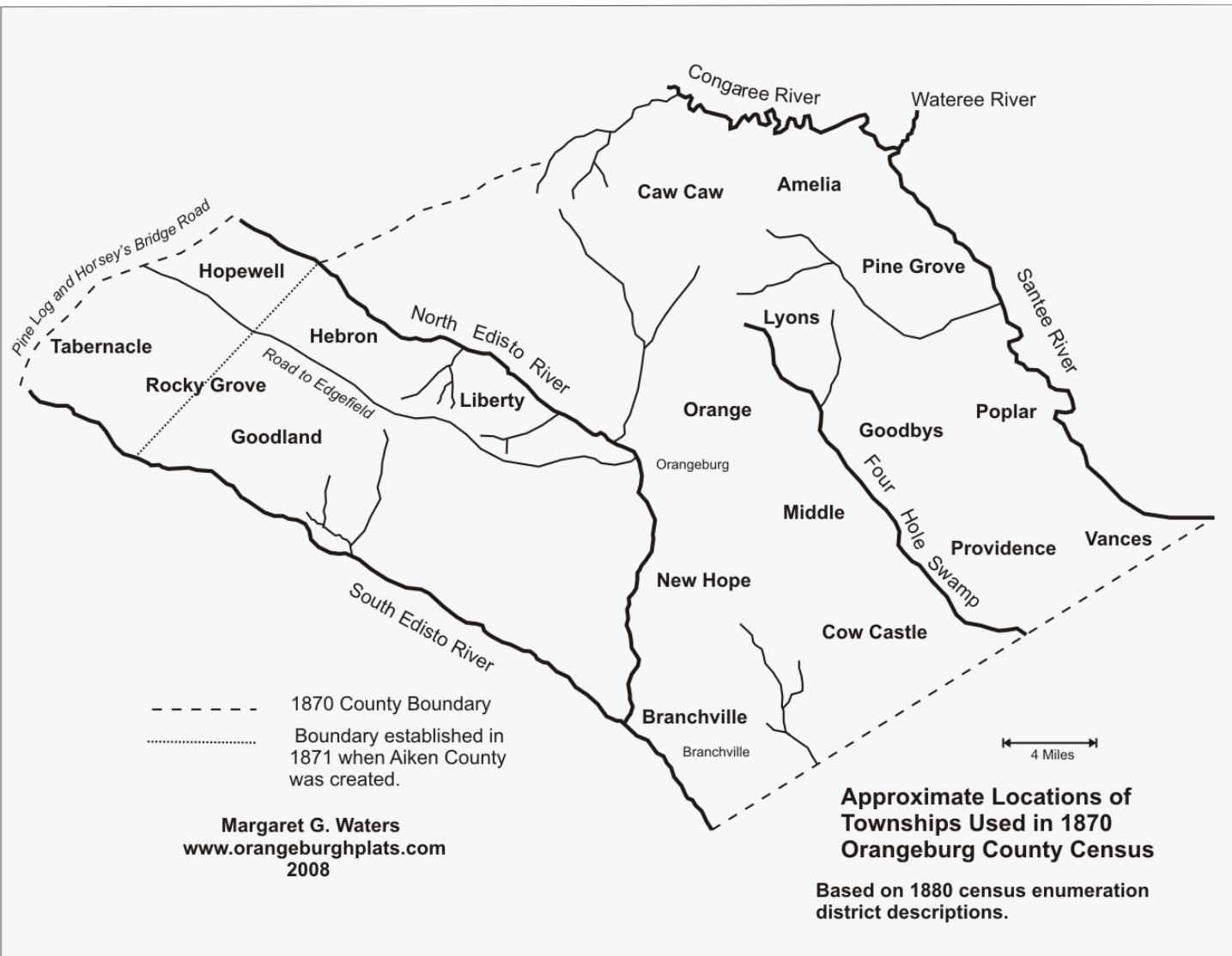


# Barnwell & Lexington From Orangeburgh





# Townships



# 1870



# Townships



1883 SC Department  
of Agriculture Map



# Census Divisions:

- 1790 – Ninety Six Road
- 1800 – Extinct Counties!
- 1810 – None
- 1820 thru 1840 – Parishes
- 1850 – Unique!
- 1860 – Post Offices
- 1870 - Townships



# OKTOBERFEST SURVEY

OCTOBER 28 & 29, 2011

1. Have you attended Oktoberfest before?
2. What do you like best about Oktoberfest?
3. What do you like least about Oktoberfest?
4. Were the speakers interesting and informative?
5. What kind of speakers would you like to have?
6. Were the meals satisfactory?
7. Were the vendors satisfactory?
8. Were the family tables satisfactory?
9. Was the venue satisfactory?
10. Would you like to see more tours? If so what type? If not what kind of activities would you like to see at Oktoberfest next year?
11. Are you interested in volunteering to help next year?
12. Are you interested in volunteering for a committee?
13. Please give us your comments, suggestions and concerns below.

**THANK YOU FOR COMPLETING THIS SURVEY  
PLEASE PLACE IN SURVEY BOX AT REGISTRATION TABLE BEFORE  
LEAVING**



## ABOUT US



### The Orangeburgh German-Swiss Genealogical Society

Our Society is a family history organization which promotes the collection and preservation of early records of the people of Orangeburgh Township, South Carolina, and their descendants. It is an eleemosynary, non-profit, non-political, and non-sectarian.

Other objectives are to serve, through publications and meetings, as a medium of exchange of Orangeburgh genealogical information; to acquaint members with available sources of genealogical materials; and to enjoy the fun and fellowship of sharing records and research.

Membership is open to all who are interested in Orangeburgh genealogy, professional or amateur, and who are interested in supporting the objectives of the Society.

Individual membership is \$18.00 per calendar year, or \$24.00 for two or more members residing at the same address. Life memberships, both Individual and Family are also available. (See application for life membership prices which vary with age of applicant)

All OGSGS Members receive the OGSGS Newsletter published four times per year. The newsletter covers such topics as: ancestry charts, family group sheets, family bibles, cemeteries, personal diaries, queries, book reviews, courthouse records, surname lists, surveys, memorials, plats, deeds, etc.

OGSGS Members also have access to the OGSGS Archives, the Society's Collection of printed and manuscript material. This collection was donated to the A. S. Salley Archives in 2009 and has been incorporated into the archives collection. All materials are stamped and acknowledged as OGSGS donation.

All OGSGS Members receive a personal invitation to OKTOBERFEST, our annual meeting of the membership. It is a yearly celebration in Orangeburg when researchers come together to share sources of genealogical materials and have fun.

If you share our goals and are interested in genealogical research in the Orangeburgh area we invite you to join our Society today by filling out our membership application located on the website [www.ogsgs.org](http://www.ogsgs.org).

**OKTOBERFEST SPECIAL FOR NEW MEMBERS ONLY**

**JOIN FRIDAY OR SATURDAY FOR HALF PRICE!!**