

# Upper Four Holes Swamp

Plats and Memories

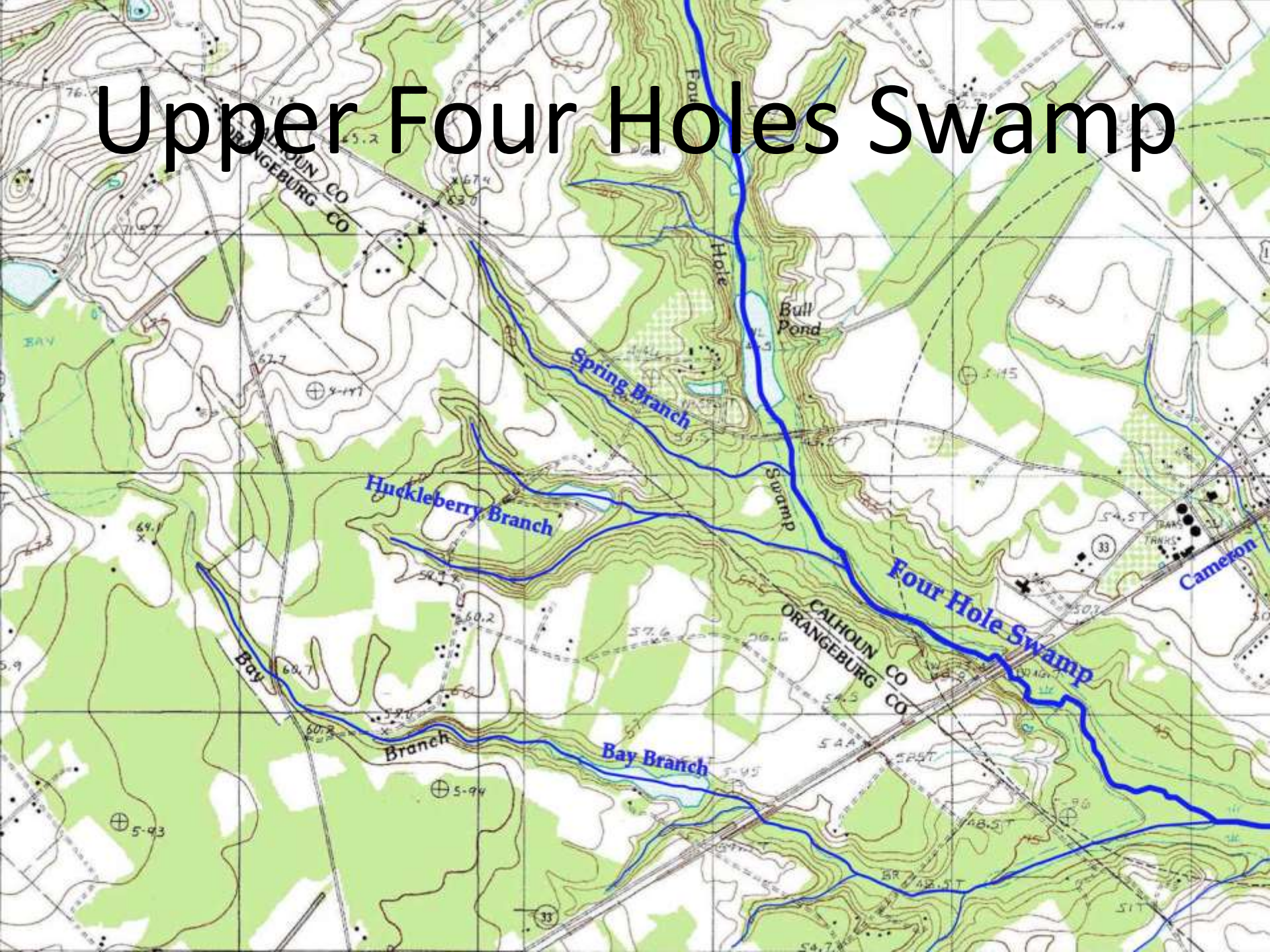
# “Mapping the Wilderness”

*“English adventurers and pilgrims who were lured to the New World by the promise of land and riches, or freedom from oppression, little imagined the wilderness that would confront them on arrival. It was the task of surveyors to establish boundaries for the would-be landowners ...”*

Silvio A. Bedini, “Early American Surveyors: Mapping the Wilderness”, Professional Surveyor Magazine - January 2008



# Upper Four Holes Swamp





# Antique Compass & Gunter's Chain



# Early Surveyors



Printed in London by

James A. Ferguson, 1854

SURVEYORS.

# Plats Studied

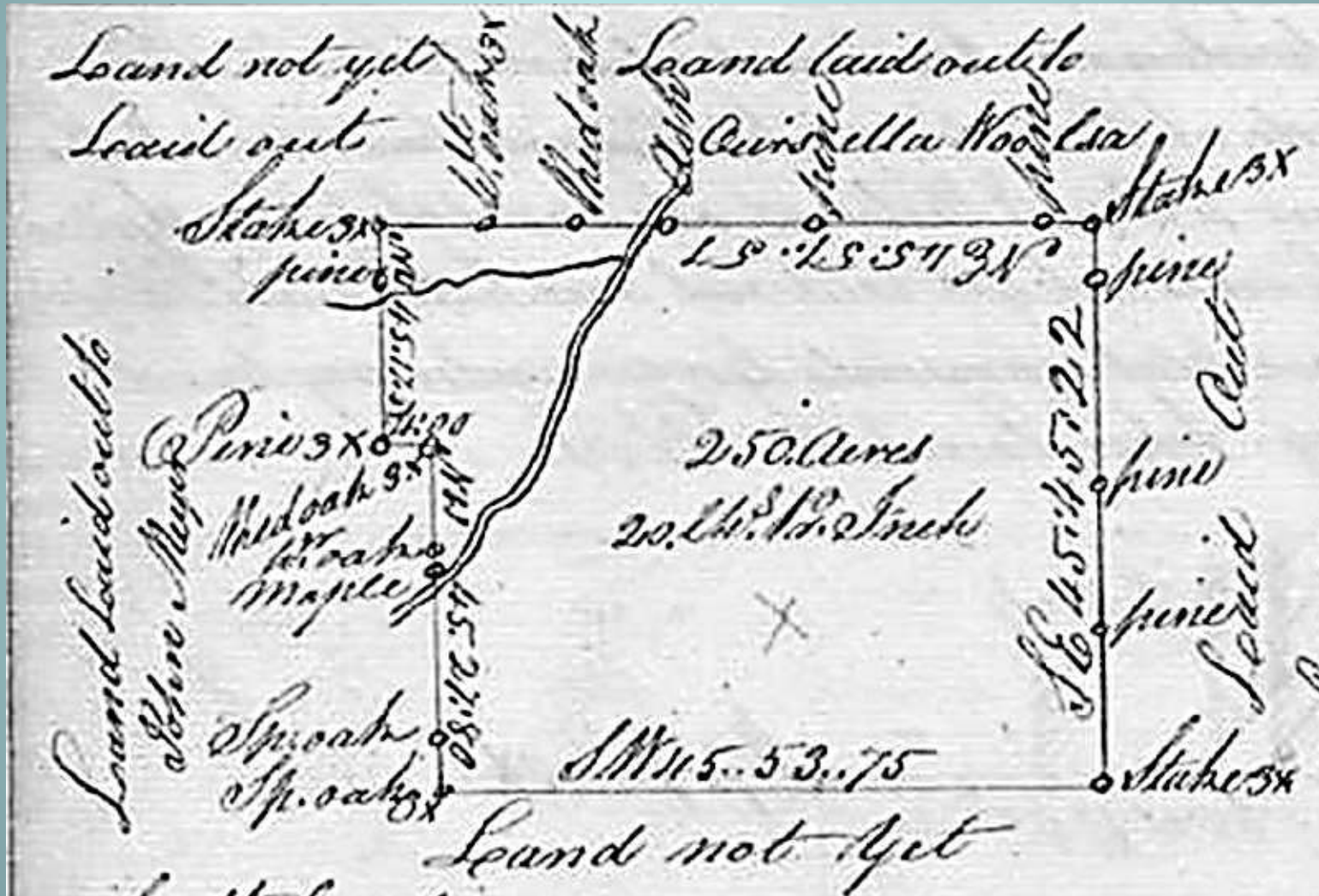
- Anna Maria Till, 250 acres, 8 Oct 1737
- John Meyer, 400 acres, 8 Oct 1737
- Pursella Woolsa, 300 acres, 12 Oct 1737
- Henry Rickenbacker, 300 acres, 8 Aug 1770
- William Hardy, 500 acres, 18 Feb 1775
- Dr. Samuel Dwight, 613 acres, 27 Feb 1826

# Plats Described by Metes & Bounds

- Mete – a boundary described by a direction and distance from a specific point
  - Sp. Oak 3x SW45 53.75
  - Stake 3x SE45 45.22
- Bound – a boundary described by a physical feature such as a stream or a road
  - Eastern margin of Bay Branch is the line



# Plat – Anna Maria Till, 8 Oct 1737





# Plat – Anna Maria Till Interpolated

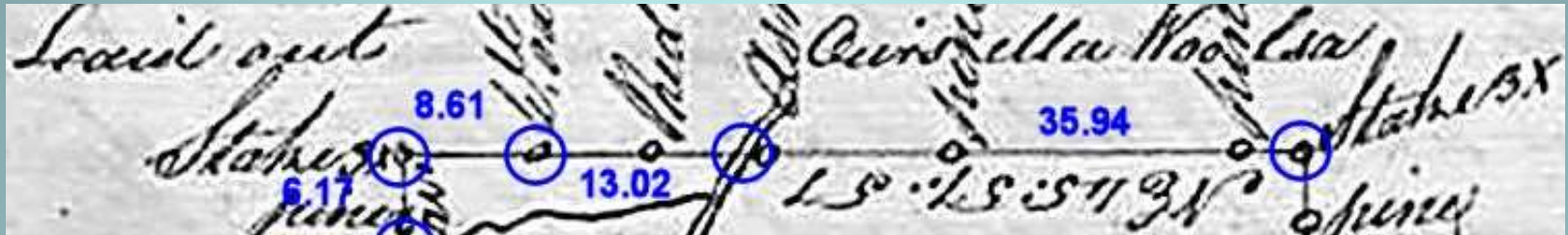


# Plotting Software – DeedMapper 4.2

- Easy entry of property descriptions
- Show that a property description “closes”
- Plot the property descriptions to scale and in the correct orientation
- Overlay the plots on a map, or map like image adjusted to scale
- Adjust the locations of the plots either individually or by groups

# Deedmapper Property Description

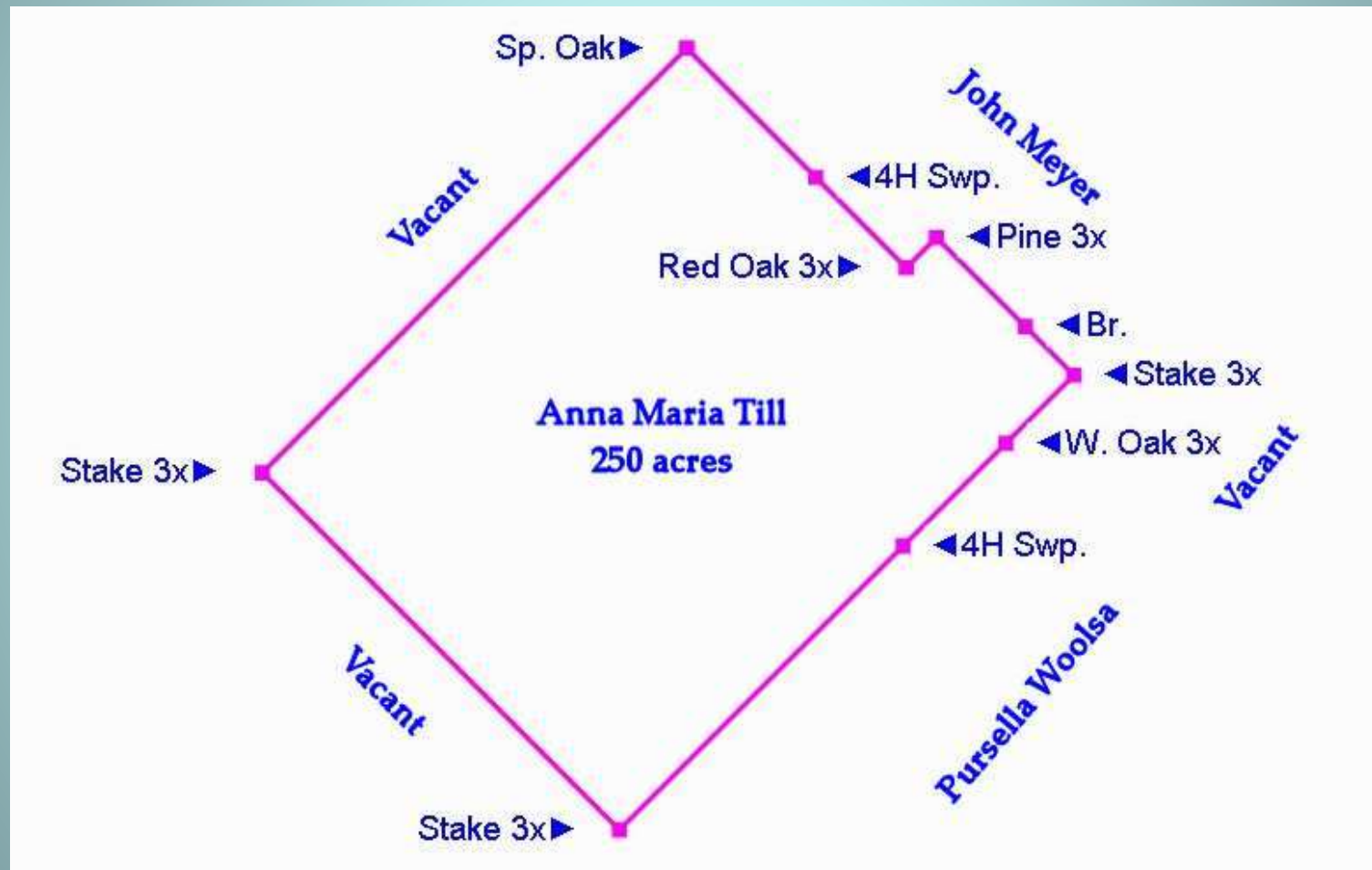
(Southeast Border, N45E, 57.57 chains)



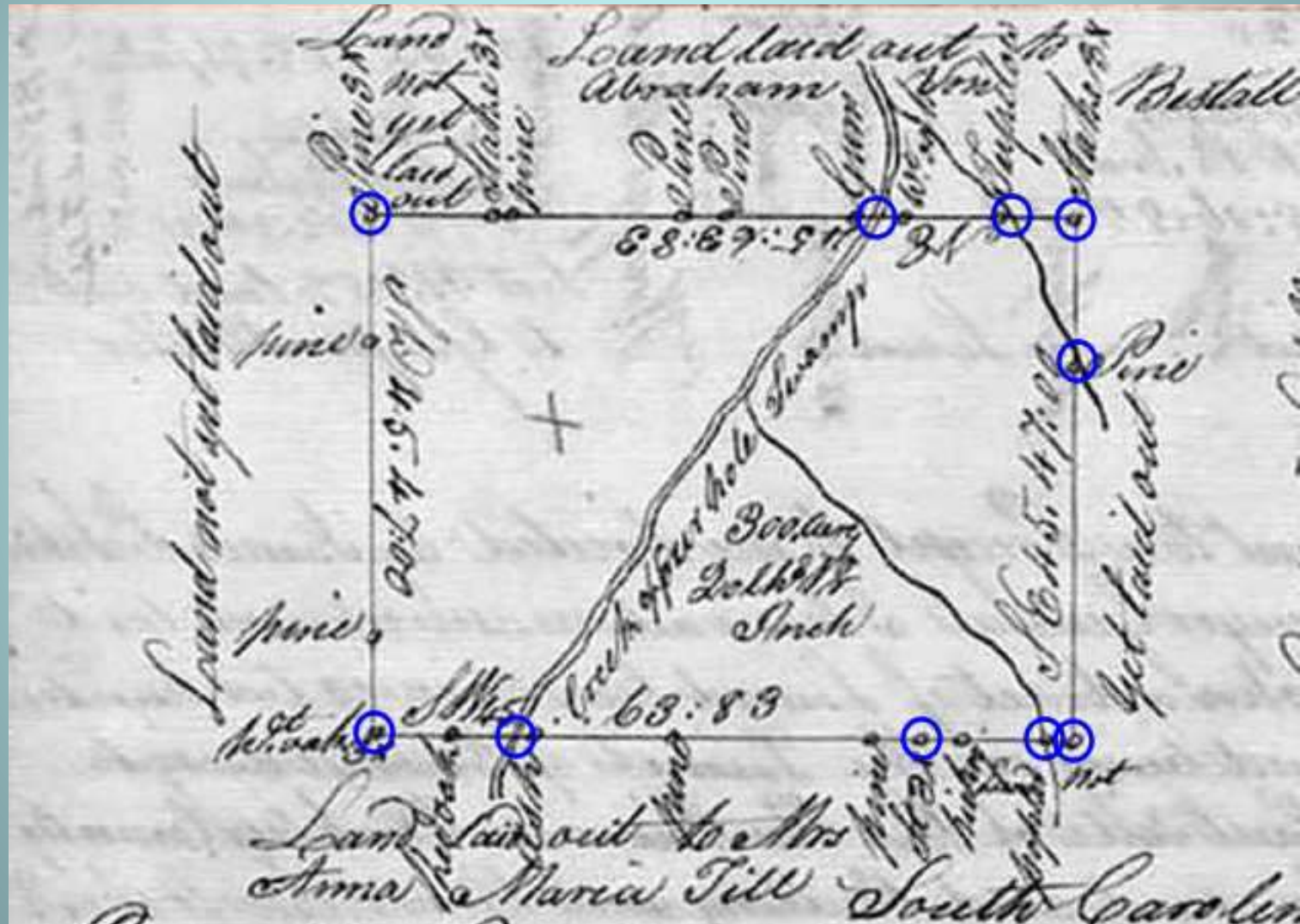
- Deedmapper data entry:
  - Pt Stake 3x
  - Ln N45E; 35.94c; Pursella Woola
  - Pt 4H Swp.
  - Ln N45E; 13.02c; Pursella Woola
  - Pt W. Oak 3x
  - Ln N45E; 8.61c; Vacant
  - Pt Stake 3x



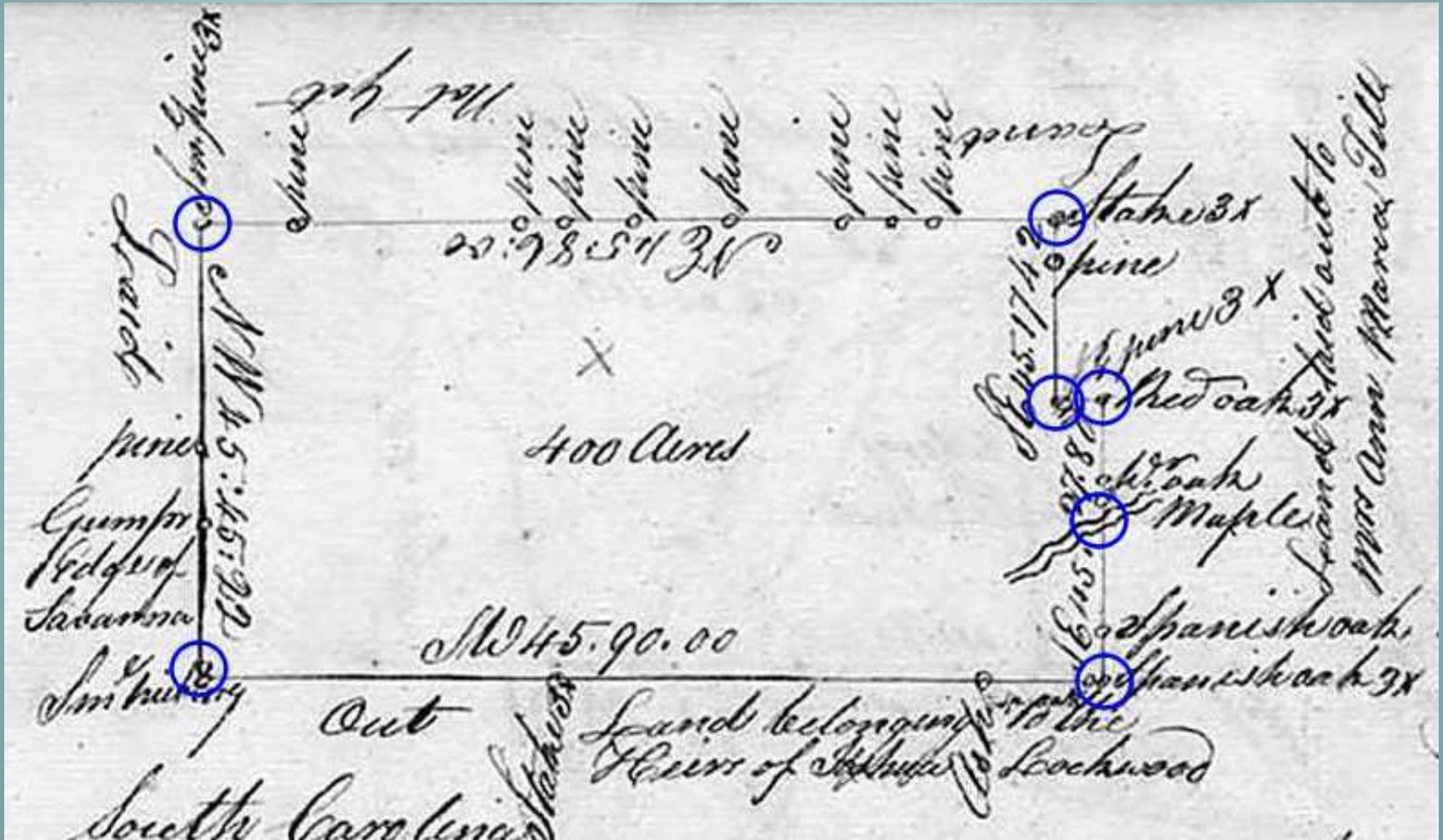
# Plot – Anna Maria Till, 8 Oct 1737



# Plat – Pursella Woolsa, 12 Oct 1737



# Plat – John Meyer, 8 Oct 1737

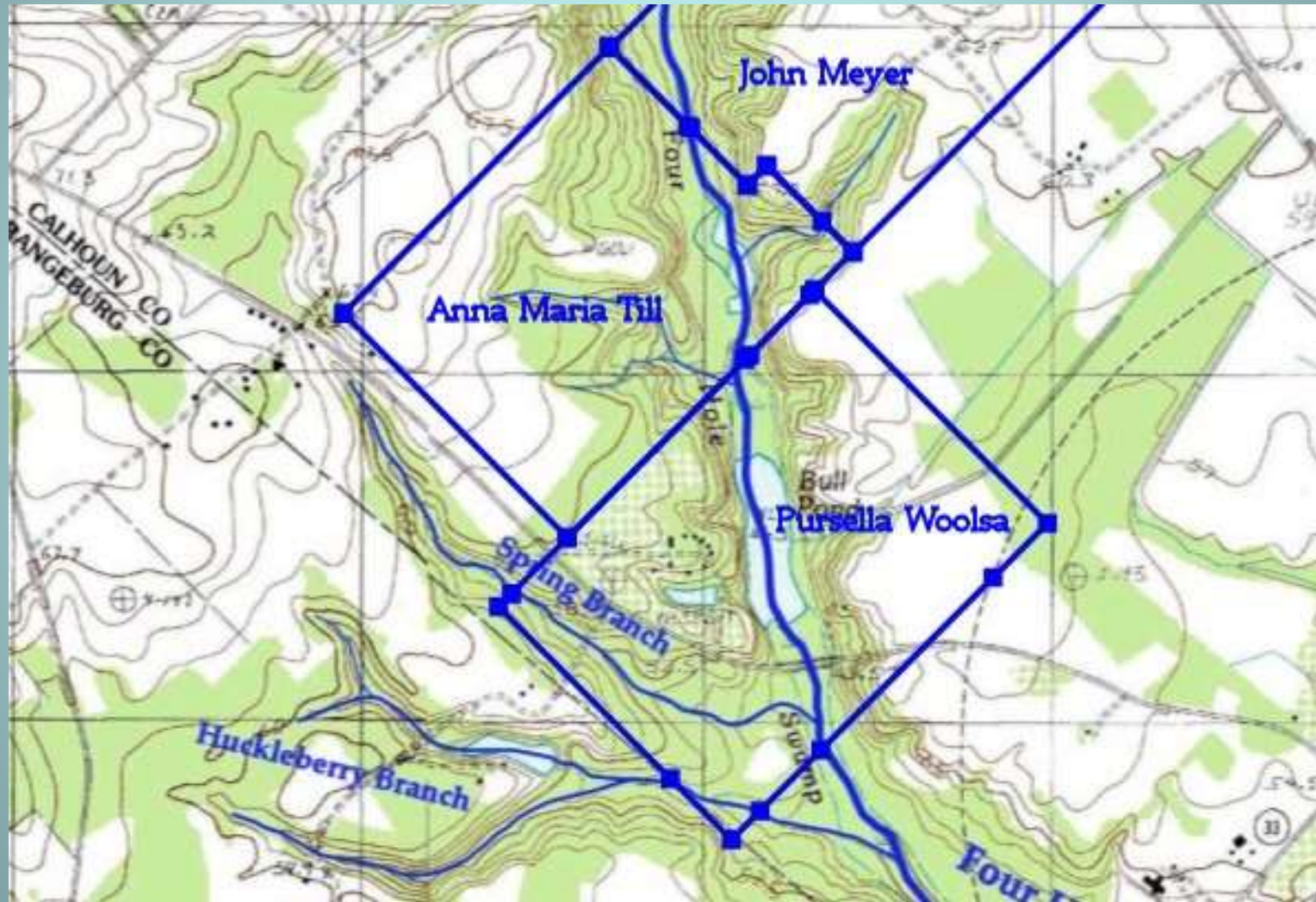




# Plot – Till, Woolsa, Meyer 1737



# Three Plats – 1737



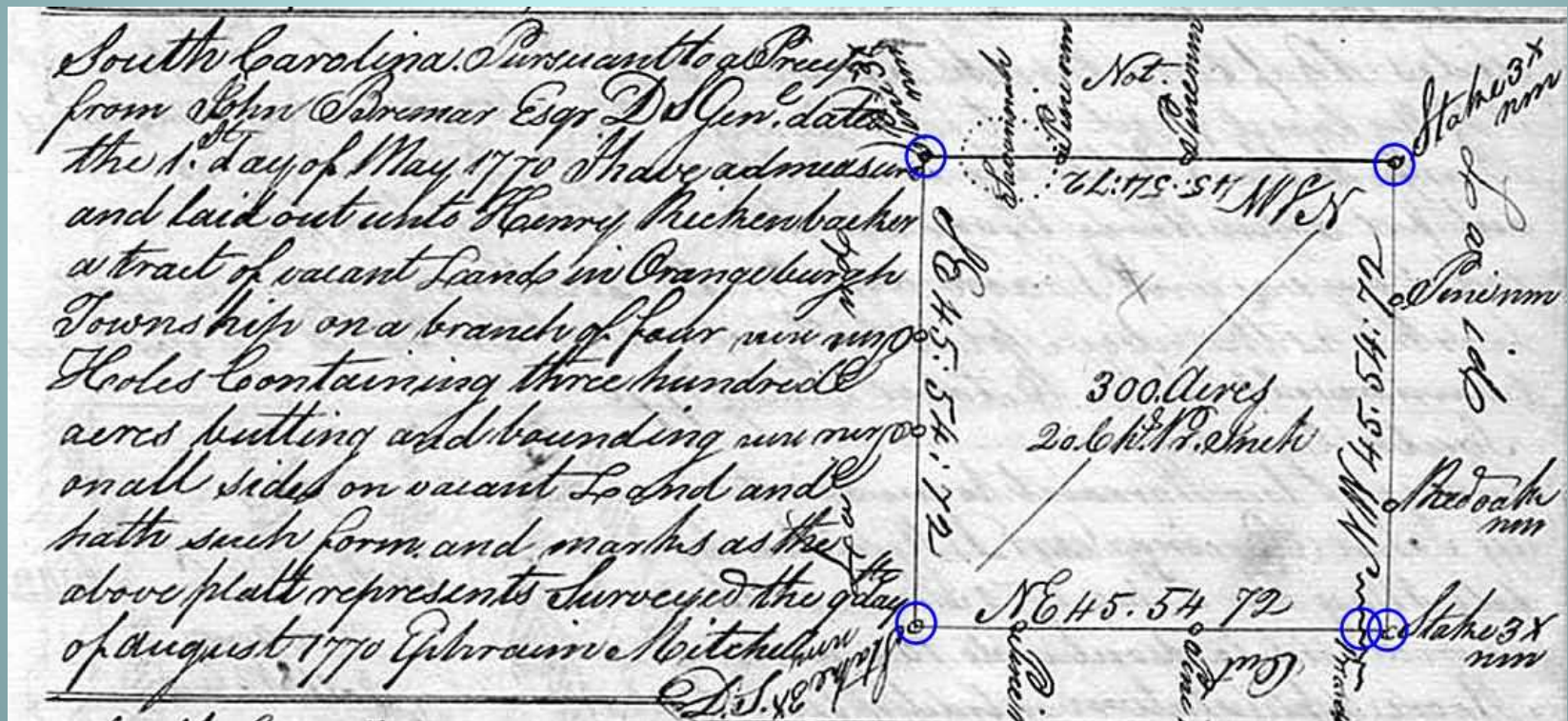
# Early Rickenbacker's of Four Holes

- Henry (Heini), 1722 –1780/81
  - Immigrant child (age 13) in 1735
  - Married Anna Till, daughter of Nicholas Till
  - Acquired Four Holes property in 1770
- Nicholas I , 1747 – 1812
  - Named after grandfather Nicholas Till
  - Inherited Four Holes Property
- Nicholas II, 1784 – 1851
  - Inherited Four Holes property

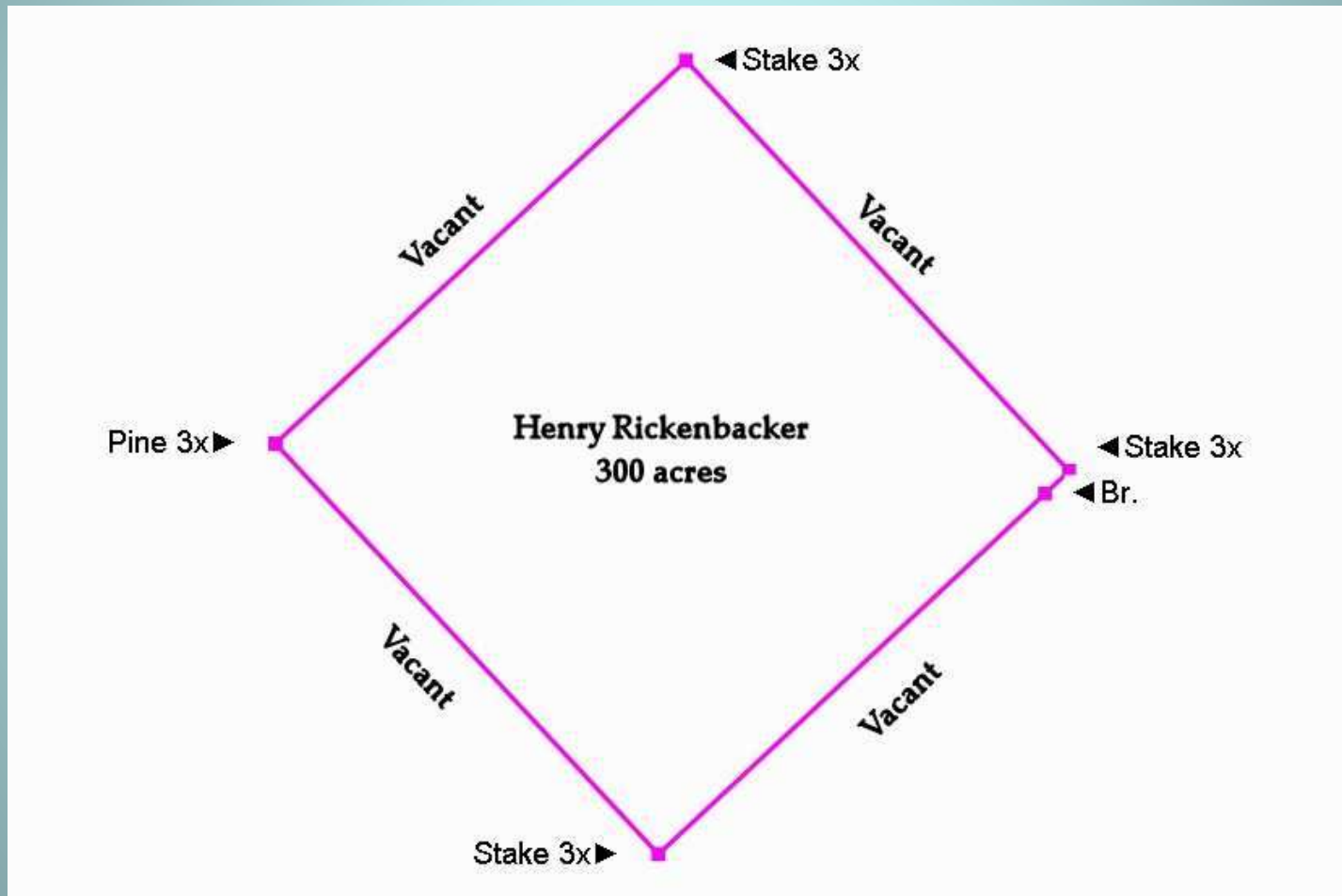


# Plat – Henry Rickenbacker, 9 Aug 1770

- Located on “a branch of Four Holes”

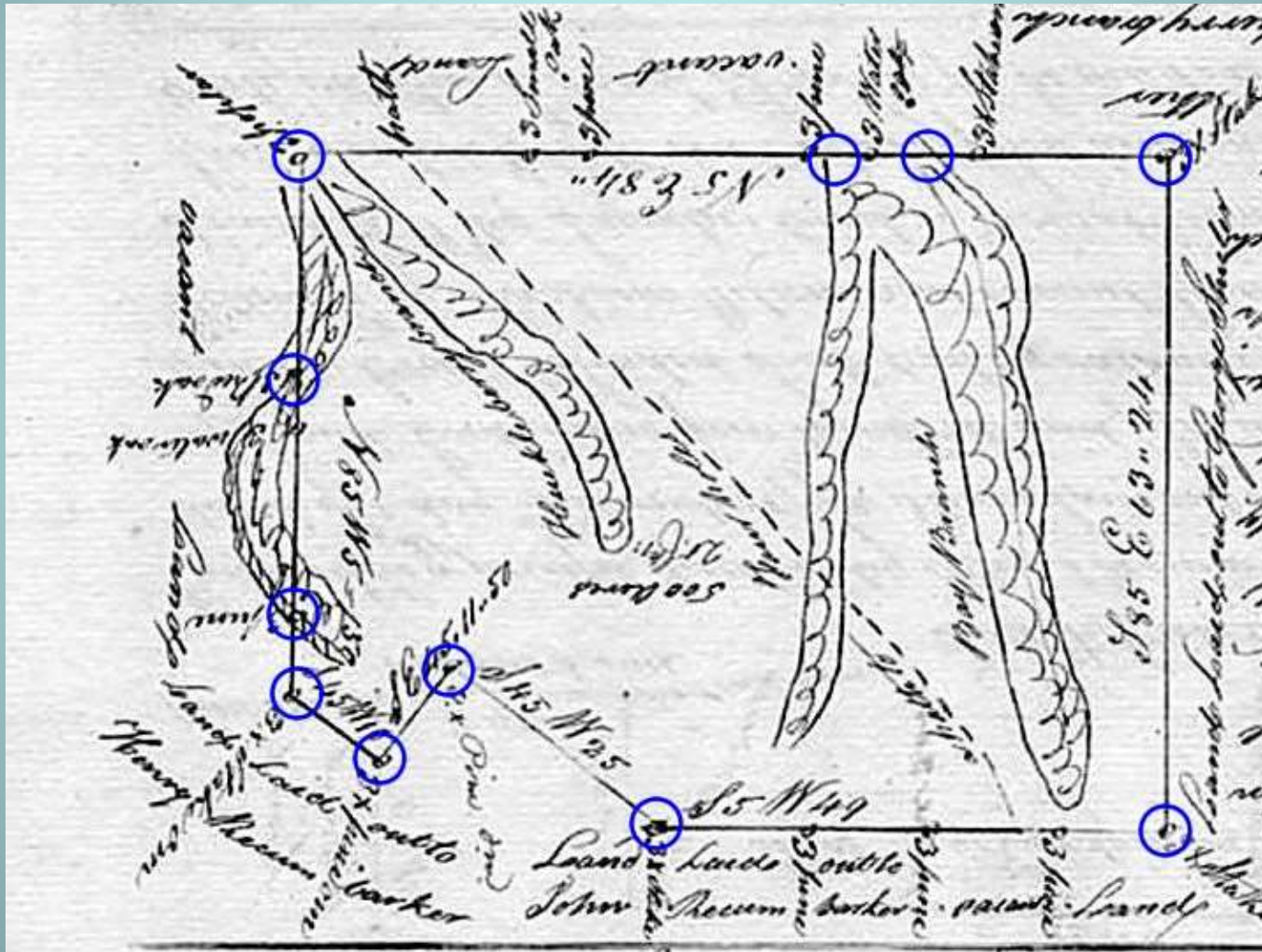


# Plot – Henry Rickenbacker, 1770



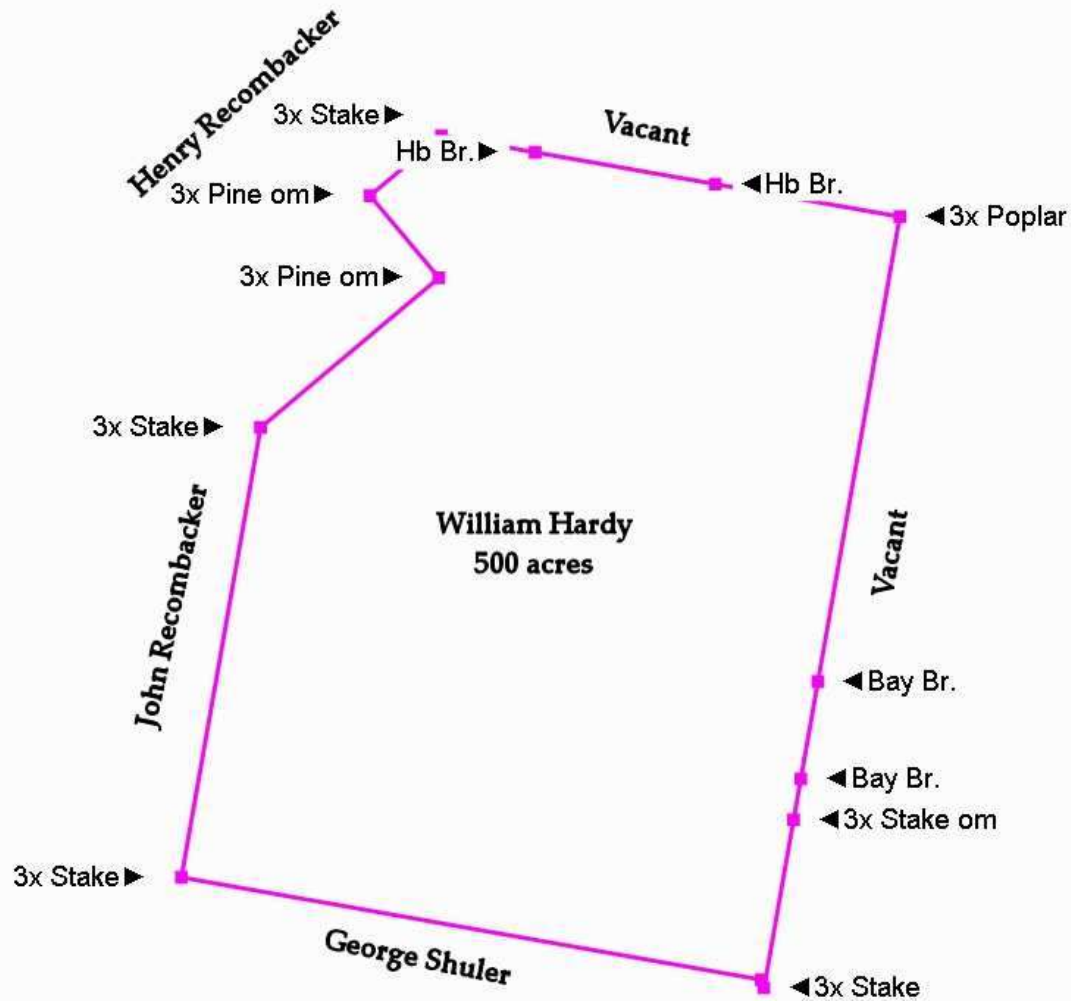


# Plat – William Hardy, 18 Feb 1775

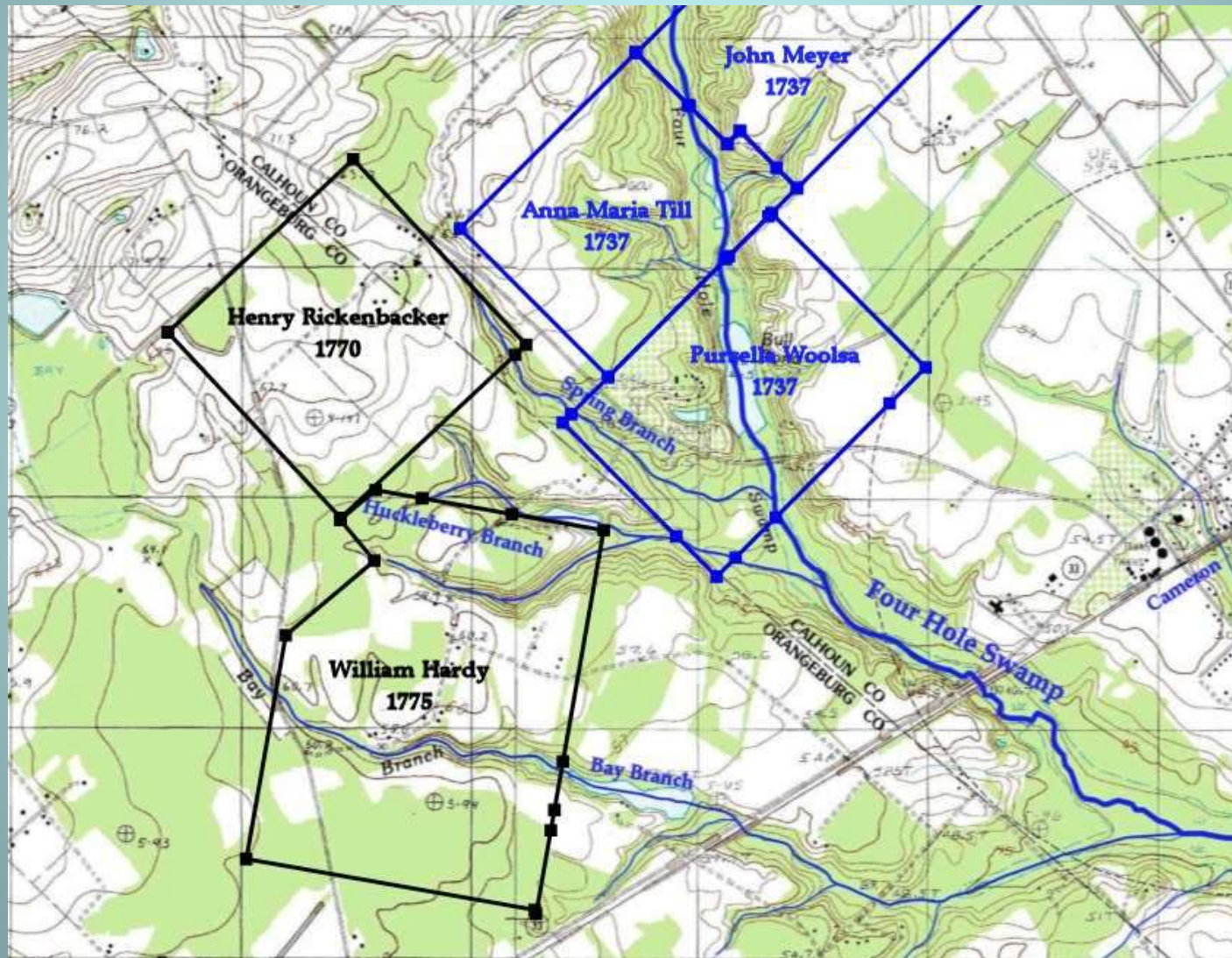




# Plot – William Hardy, 1775

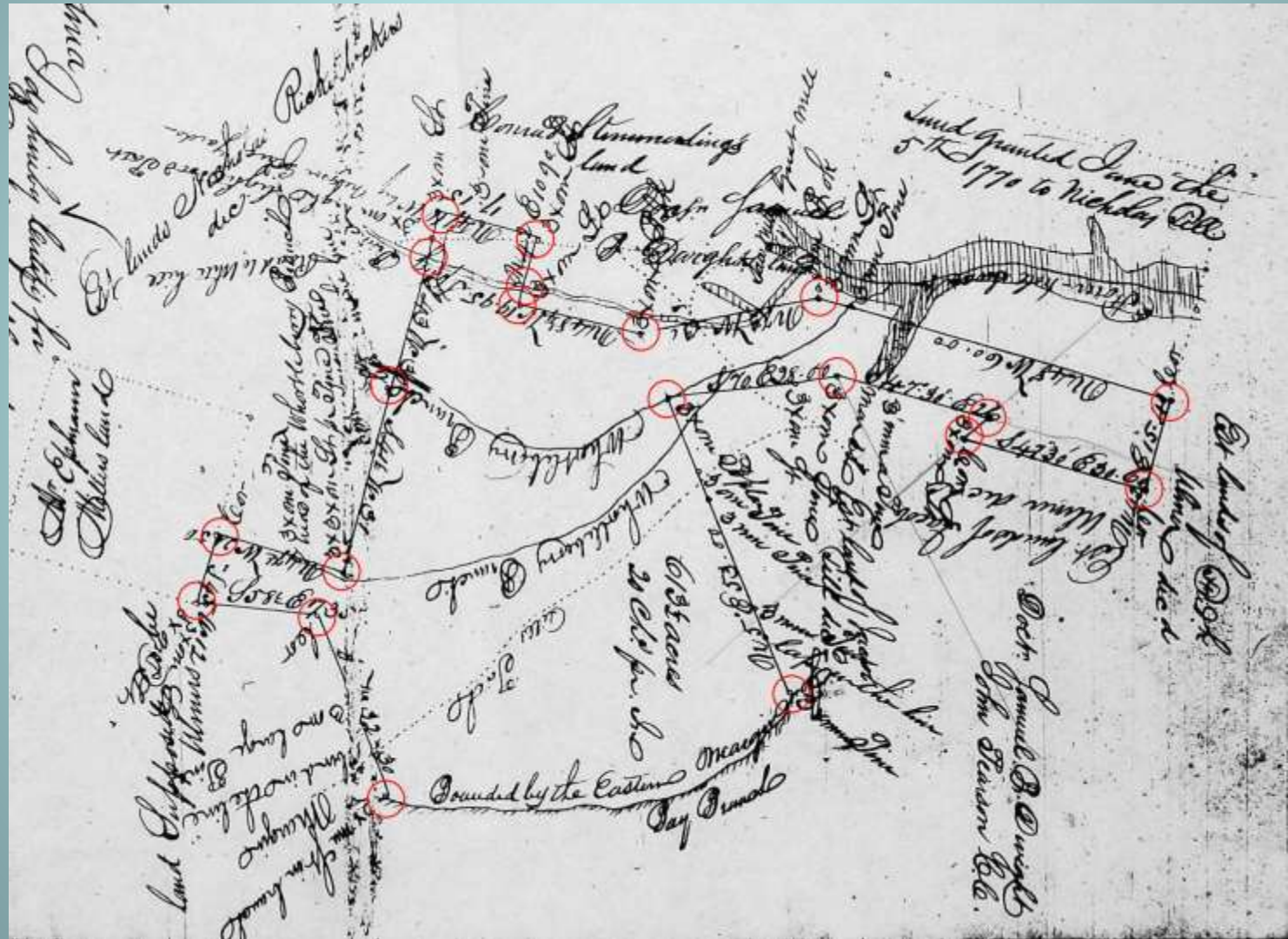


# Five Plats, 1737 – 1775



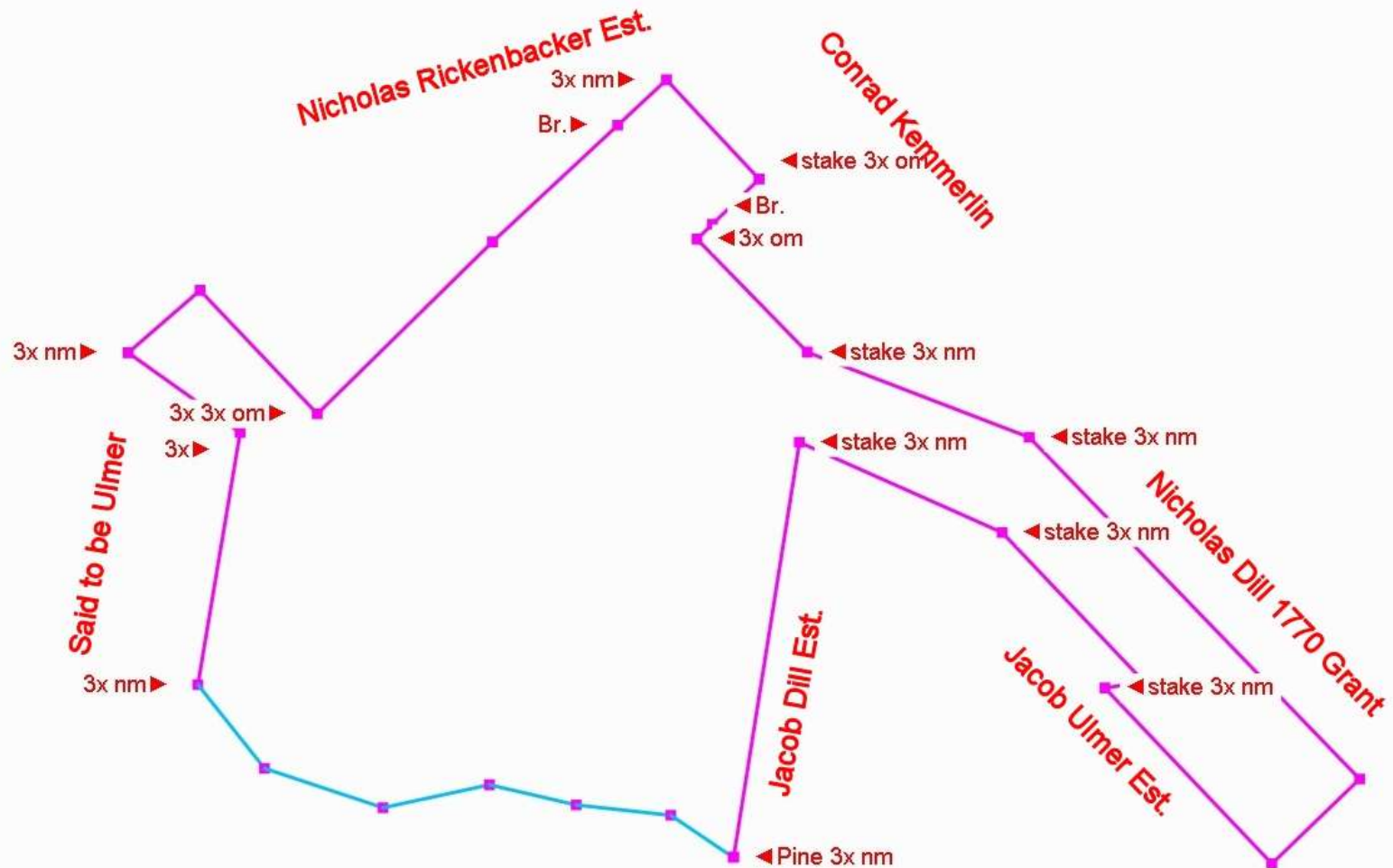


# Plat - Samuel Dwight, 27 Feb 1826

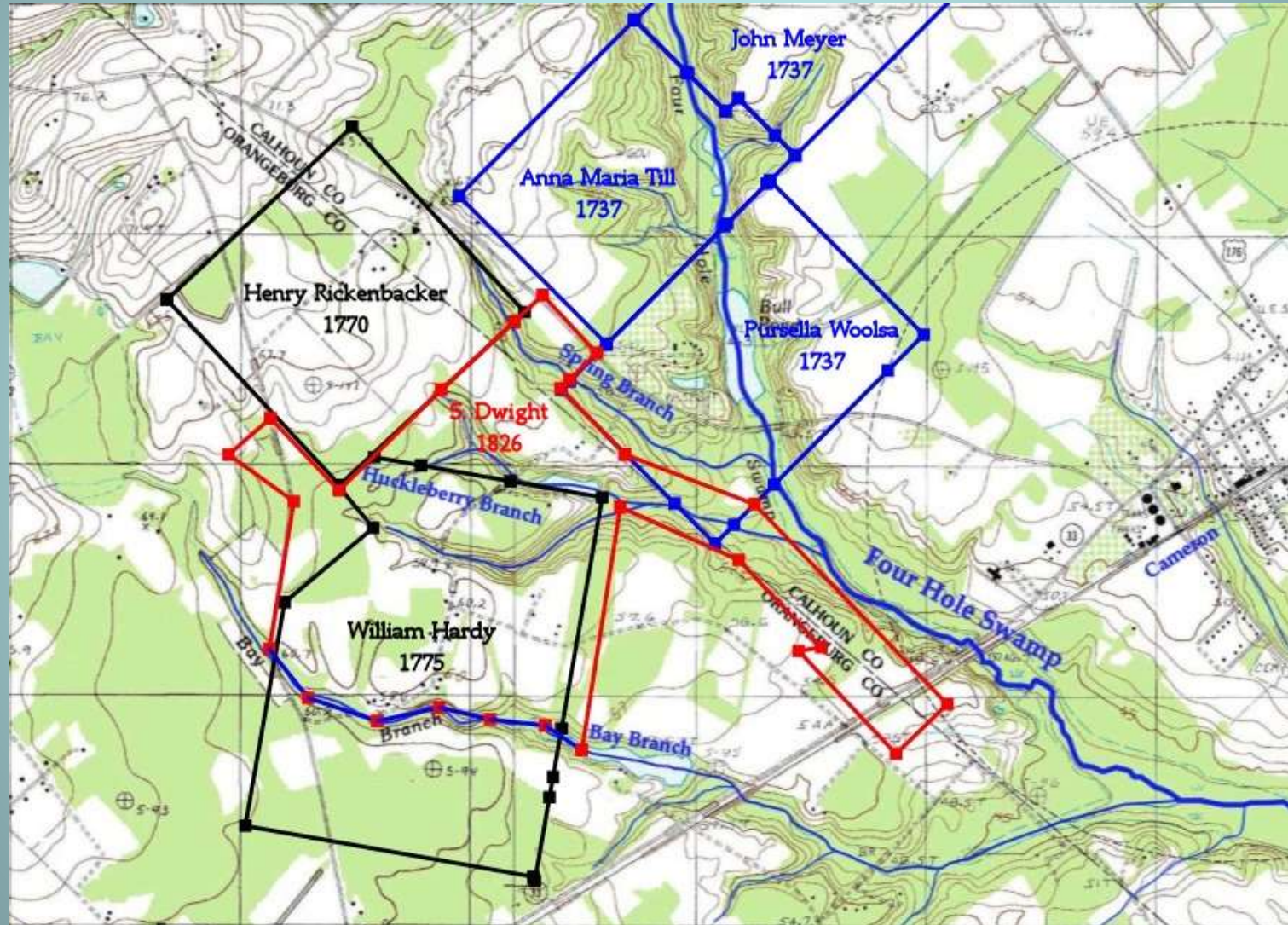




# Plot – Samuel Dwight, 1826



# Six Plats, 1737 – 1826



# Upper Four Holes Swamp Plats

- Three plats from 1737, two plats from the 1770s and one plat from 1826 have been reliably located on Upper Four Holes Swamp.
- An Identifiable drainage pattern on the plat or on known adjacent plats is virtually the only reliable way of locating an old plat on a modern map.
- Old corner and line markers no longer exist and many old property boundaries have been moved,